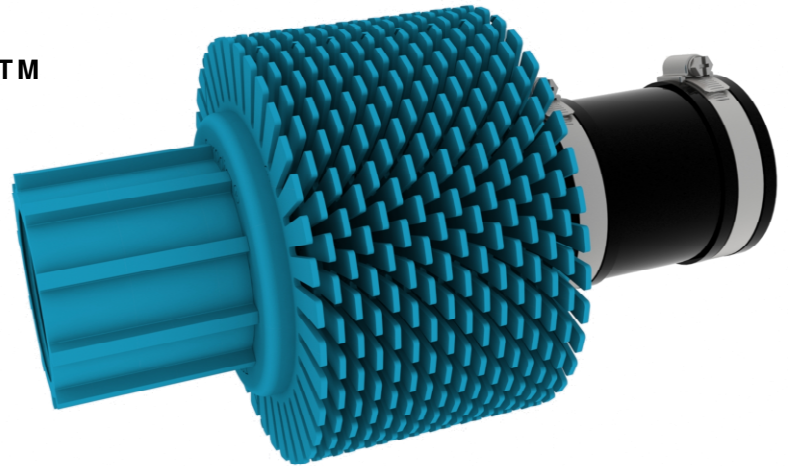


seradisTM

Filter Screen Assembly



Specification:

Filter body items:	ABS
Filter discs:	PC
Weight (kg):	1
Length (mm):	268 with 1 adaptor + rubber coupling 243 with 1+1 adaptors (supplied)
Diameter (mm):	150
Supply/exhaust port:	2" BSP (50mm nb)
Flexible coupling:	EPDM
Worm drive clips:	Stainless steel

Performance :

Flows up to 10 m³/hr with negligible pressure loss. The pressure loss will increase with the addition of extra discs. Multiple filters can be connected to minimise pressure losses and maximise filtration

Filter:	Number of discs	Particulate size (> mm)
	16 (min)	3.2
	20	2.11
	24	1.39
	28	0.89
	32 (max)	0.52




Maintenance:

Maintenance is extremely simple and mainly requires a periodic check to ensure filter discs are clear of debris

Part Numbers:

Complete filter, boxed	FIL50-A
Pack 16 filter discs, boxed	FIL50-DSC

Water Powered Technologies
Unit 14A, Kingshill Industrial Estate,
Bude, Cornwall, EX23 8QN, UK

-  +44 (0)1288 354454
-  info@waterpoweredtechnologies.com
-  www.waterpoweredtechnologies.com

